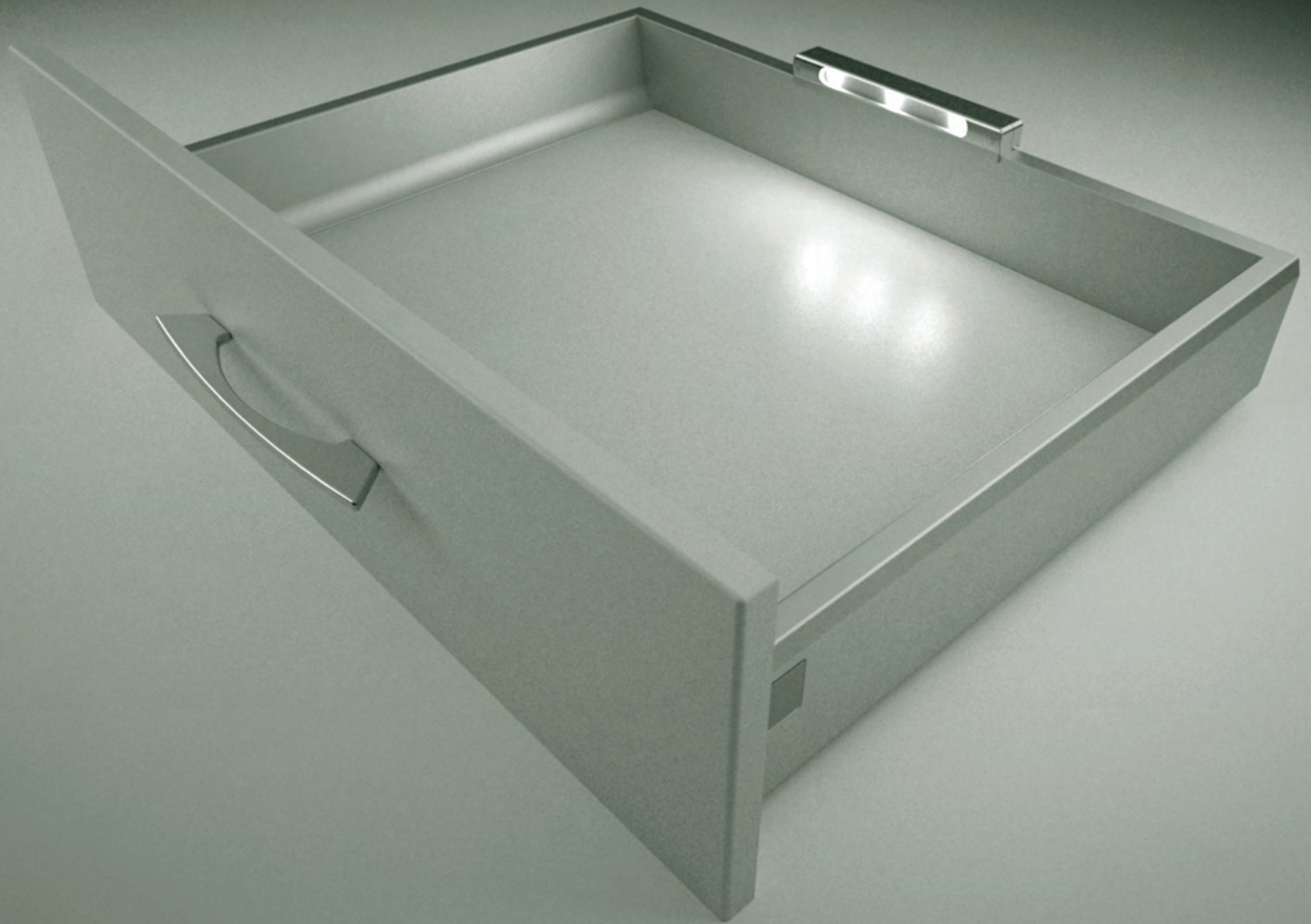


***Faro***



***Light in  
movement***



**FORMENTI &  
GIOVENZANA**



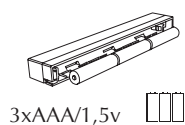
### Many advantages:

- Automatic movement actuation with patented sensor and electronic chip
- Bright last generation LED spaced and orientated to illuminate the content of your drawers
- Low consumption set up for 20.000 cycles of 15 sec of illumination on a single set of standard AAA batteries
- Easy to fix on drawer back walls in metal or chipboard
- Simple access for change of batteries

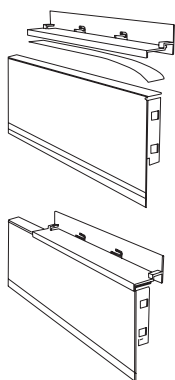
### Easy to assemble:

- Mark the centre of the drawer back
- Remove the base of the light by pulling laterally on the casing
- Use the self-adhesive pads, position the base and press it onto the top edge of the drawer back (suitable for both wooden and metal back)
- Secure the batteries or remove the paper safety strip and slide the casing onto the base until it clips into position

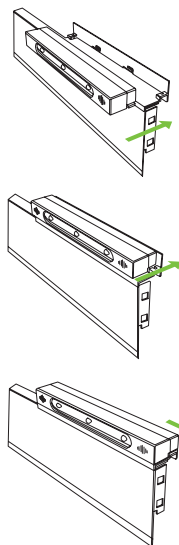
#### 1 Batteries



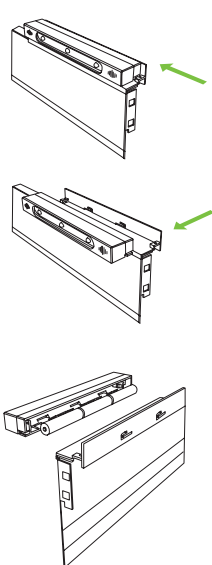
#### 2 Support



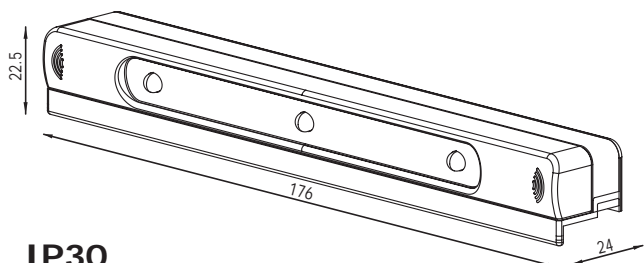
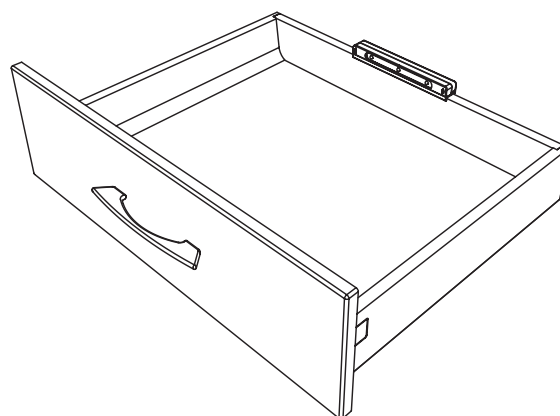
#### 3 Assembly



#### 4 Disassembly



Instructions on [www.fgv.it](http://www.fgv.it)



**IP30**



**Made in Italy**



#### designation

#### code

Faro - retrofit kit (batteries included)	59.BFR0.**.00000C1
Faro - industrial set (100 lamps + instructions sheet)	59.0FR0.**.0000020
Box of 300 AAA batteries	59.0FRB.000000020

\*\* Finishes:

F1 = White Ral 9003    S6 = Metal Champagne    06 = Grey Ral 7042